

BASEBALL 2011

13U TRANSITION LEAGUE

2012 league age 13U players

September 10th – October 15th, 2011

Practices: **Thursday at 5:00pm**
 Games/Workouts: **Saturday at 10:00am in the Foxboro Area**
 Cost: **\$225/member • \$250/non-member Individual Entries Only**

The Transition League is designed for players making the transition from the small diamond to the 90' diamond. This league will consist of practice sessions on the intermediate diamond as well as the full 90' diamond. It will also consist of competitive games against other 13U players. Players will learn and put to use the skills that are not taught on the smaller diamonds such as leading, pitching from the stretch, etc. If you are a player making this transition, this is the program for you!

Interested in the 2012 13U RBI HAWKS? If so, this program will be used to evaluate candidates for this team.

INDIVIDUAL Entry includes:

- 6 weeks of workouts/ games
- RBI T-shirt and hat
- Professional coaches
- Weekly practice

15U WOOD BAT LEAGUE

2012 league age 14U-15U players

September 11th – October 23th, 2011

Games: **One 9 inning game each Sunday for 7 weeks**
 Location: **Games and workouts are located in the Foxboro area as well as at RBI Baseball**
 Cost: **\$250/member • \$275/non-member \$300/Team Individual and Team Entries Welcome**
 Practices: **Wednesday and Friday at 5:00pm**

The 15U Wood Bat league welcomes incoming 8th and 9th graders to play in the wood bat league. Individual and team entries are welcome. This league will consist of 7 scheduled 9 inning games as well as two weekly practices. Professional coaches will work with the players at each game and practice to ensure players are properly prepared for the upcoming spring season. Team entries must have a home field to enter this league.

Interested in the 2012 14U or 15U RBI HAWKS? If so, this program will be used to evaluate candidates for this team.

INDIVIDUAL Entry includes:

- Wooden Bat
- TWO WEEKLY PRACTICES
- 7 Game Schedule
- RBI T-shirt and Hat
- 9 inning games
- Professional Coaches

TEAM Entry includes:

- Team Liability Insurance
- 7 Game Schedule
- 9 inning games
- Discounts on uniforms, baseballs, equipment, and cage rentals

18U WOOD BAT LEAGUE

For classes of 2012, 2013, and 2014

September 11th – October 23th, 2011

Games: **One 9 inning game each Sunday for 7 weeks**
 Location: **Games and workouts are located throughout Southern MA as well as RI**
 Cost: **\$250/member • \$275/non-member \$300/Team Individual and Team Entries Welcome**

Practices: **Two weekly practices. Once will be at a time determined by the coach, Once will be Friday at 4:00pm**

The 18U Wood Bat League welcomes incoming Sophomores, Juniors, and Seniors to play in this wood bat league. Individual and Team entries are welcome. This league will consist of 7 scheduled 9 inning games as well as two weekly practices. Each coach will schedule a weekly practice and RBI will host a league wide practice each Friday at 4:00pm. Each player will play a competitive schedule while learning from RBI's professional coaches. Team entries must have a home field to enter this league.

Interested in the 2012 16U, 17U, or 18U RBI HAWKS? If so, this program will be used to evaluate candidates for this team.

INDIVIDUAL Entry includes:

- Wooden Bat
- TWO WEEKLY PRACTICES
- 7 Game Schedule
- RBI T-shirt and Hat
- 9 inning games
- Professional coaches

TEAM Entry includes:

- Team Liability Insurance
- 7 Game Schedule
- 9 inning games
- Discounts on uniforms, baseballs, equipment, and cage rentals

RBI Baseball Programs & Wooden Bat Leagues

This is the 14th year that the team at RBI Baseball Academy has conducted a fall baseball program. The RBI fall programs and high school wood bat leagues provide a quality structured environment for baseball players to continue to improve their skills throughout the fall months. Players from ages 5-18 are eligible to play in one of our seven divisions. Players may join the league as an individual entry, or as part of a team entry. Don't miss out on a great opportunity to get ahead of your competition and refine your skills.

Register Today!



Come be a part of the RBI HAWKS!

Tryouts for the 2012 RBI Hawks travel baseball program will begin during our fall 2011 season in the 13U-18U age range. The RBI Hawks travel baseball program provides opportunities for teenage players to showcase their skills throughout the spring and summer with a 35 game schedule. A competitive schedule helps all RBI Hawks to raise their game to the next level. Through hard work and dedication our Hawks staff prepares our players to succeed both on the field and in life. The Hawks directorial staff will be beginning to form its 2012 teams throughout this fall season and it is **HIGHLY** recommended that anyone interested in playing for the Hawks in 2012 join our fall leagues. For more information on this program please email Marc DesRoches at Marc@rbiacademy.com. **See you in September!**

Visit our website at

www.rbiacademy.com



97 Green Street, Suite #2
 Foxboro, MA 02035



2011 FALL BASEBALL PROGRAMS & LEAGUES

2011

Programs for RBI Baseball and Hawks Travel Teams INSIDE!



FALL BASEBALL PROGRAMS & LEAGUES

Ages 5-18 September / October

- HEAD START PROGRAM (AGES 5-6)
- 8U INSTRUCTIONAL DIVISION (AGES 7-8)
- 10U PLAYER DEVELOPMENT DIVISION (AGES 9-10)
- 12U ADVANCED PLAYER DEVELOPMENT DIVISION (AGES 11-12)
- 13U TRANSITION LEAGUE (AGE 13)
- 15U WOOD BAT LEAGUE (AGES 14-15)
- 18U WOOD BAT LEAGUE (AGES 16-18)
- NEXT LEVEL STRENGTH & CONDITIONING

PRESORTED
 STANDARD MAIL
 U.S. POSTAGE
 PAID
 PERMIT #154
 PORTLAND, ME

508-543-9595
www.rbiacademy.com

MISSION



The mission of the **RBI Baseball Academy** is to provide young people of all ages with the skills to guide them toward success, not only on the field, but also throughout life. Through baseball and softball instruction we teach the importance of individual responsibility, team work, and a positive attitude toward life's challenges.

RBI Fall Baseball will include:

- RBI has programs for ages 5-18
- Professional courteous coaches provided by RBI Baseball Academy for individual registrations
- Free T-Shirt and Hat for all individual participants
- Weekly workouts
- Discounts on pro-shop items for all team/individual entries

*Due to the status of some athletic fields we will be utilizing, dates that may get cancelled due to inclement weather may not be rescheduled. RBI will make every attempt possible to play scheduled games but does not guarantee that any make-up games will be played.

BASEBALL 2011

HEAD START PROGRAM

Players born between 5/1/05 - 4/30/07

September 17 – October 15, 2011

Games: Saturdays 8:30am – 10:00am
Foxboro, MA

Cost: \$125/member • \$150/non-member
Individual Entries Only

The Head Start program is a 5 week program designed to introduce new players to the game as well as to provide players with the basic fundamentals needed to succeed at playing the game of baseball. Each week players will meet for a 1 1/2 hour session. Part one of the session will focus on drills and fundamentals followed by a game in part two. Space is limited in this division. All players will be placed on a team coached by one of our professional coaches and receive an RBI T-shirt and hat.

8U INSTRUCTIONAL DIVISION

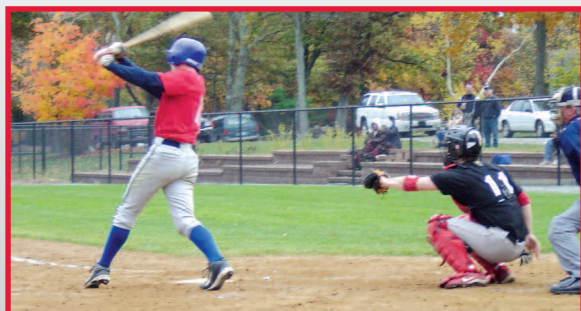
Players born between 5/01/03 - 4/30/05

September 17 – October 15, 2011

Games/Practices: Saturdays 10:30am – 12:30pm
Foxboro MA

Cost: \$125/member • \$150/non-member

The 8U Instructional Division is designed to enhance player's fundamentals as well as their overall understanding for the game of baseball. A focus on the fundamentals of throwing, catching, fielding, hitting, and base running will be stressed by RBI's highly trained coaching staff. Players will not only participate in instructional drills but will also have the opportunity to play in live coach-pitch instructional games. These games will be coach-pitch to ensure that all players receive the same amount of quality instruction. We reserve the right to move a player up or down a division to ensure that every entry has a safe, challenging, and fun-filled learning experience.



10U PLAYER DEVELOPMENT DIVISION

Players born between 5/01/01 - 4/30/03

September 10 – October 15, 2011

Practices: Tuesday 5:00pm – 6:30pm
Games/Practices: Saturdays 9:00am – 12:00pm
Foxboro MA

Cost: \$159/member • \$199/non-member

The 10U Player Development Division is a newly developed program to RBI's Fall Baseball. This division was designed to help players who have experience in kid-pitch leagues develop both their baseball skills as well as their overall athleticism. Our experienced staff has recognized that many players at this age lack the physical tools needed in order to improve their baseball-specific skills. The 10U Player Development Program will combine drills to improve baseball skills with exercises that will enhance a player's athleticism and coordination. Live kid-pitch games will also be played during the Saturday morning sessions. We reserve the right to move a player up or down a division to ensure that every entry has a safe, challenging, and fun-filled learning experience.

12U ADVANCED PLAYER DEVELOPMENT DIVISION

Players born between 5/01/99 - 4/30/01

September 10 – October 15, 2011

Practices: Tuesday 5:00 – 6:30pm
Games: One – 6 inning game each Saturday in
the Foxboro, MA area

Cost: \$159/member • 199/non-member

Formerly our Little League Major Division, the 12U program has been restructured to provide players with a more quality and competitive program. The 6-week program will be a progressive development process starting with an initial evaluation workout to see where each player's current talent level stands. Skill sessions will focus both on baseball-specific skill development as well as functional on-field athletic training to promote growth as both a baseball player and overall athlete. Six inning games will be played during this season to combine both instruction and competition.

NEXT LEVEL



NEXT LEVEL STRENGTH & CONDITIONING

A perfect compliment to your fall baseball season...

Session 1: September 12 – October 12, 2011

Session 2: October 16 – November 16, 2011

Mondays and Wednesdays: 6:00pm-8:00pm

Location: RBI Baseball Academy, Foxboro, MA

Cost/Session: \$179/member • \$219/non-member

Both Sessions: \$339/member • \$419/non-member

This is a 5- or 10-week program designed for serious baseball players who are looking to not only improve their on-field baseball skills but their overall athleticism through strength and agility training. The program includes an hour of baseball training from the professional instructors at RBI and an hour of strength & agility training from **Premier Athlete Training's** certified strength and conditioning specialists. Groups will be divided by age, grade, and physical maturity to ensure each athlete a challenging and safe training environment.

10% DISCOUNT FOR ALL REGISTERED FALL BALL PARTICIPANTS

Don't settle for another average season...
Take your game to the **Next Level** today!

RBI FALL 2011 REGISTRATION

Team Name or
Player's Name: _____
Coach's Name or
Parent's Name: _____
Address: _____
City, State, Zip: _____
Phone: (H) _____ (W) _____
Email Address: _____
Age: _____ D.O.B.: _____/_____/_____
2011/2012 Grade: _____

Please check desired division:

HEAD START PROGRAM Individual
8U INSTRUCTIONAL DIVISION Individual
10U PLAYER DEVELOPMENT DIVISION Individual
12U ADVANCED PLAYER DEVELOPMENT DIVISION Individual
13U TRANSITION LEAGUE Individual
15U WOOD BAT LEAGUE Individual Team
18U WOOD BAT LEAGUE Individual Team
STRENGTH & CONDITIONING Session 1 Session 2 Both

Would you like to be contacted by RBI regarding our tryouts for the RBI HAWKS Travel Baseball program? Yes No

POSITION CHOICE: (P, C, 1B, 2B, 3B, SS, OF)

1st choice: _____ 2nd choice: _____

T-SHIRT SIZE: (Adult) S M L XL

Bat Length: _____ (Wood Bat Leagues only)

AMOUNT ENCLOSED WITH APPLICATION: \$ _____

YES, apply remainder of balance to credit card on August 24, 2011.

Payments can be made via check, money order or credit card:

(circle one) MasterCard Visa American Express

Name on Card _____

Card No. _____ Exp. Date _____

Billing Address: _____

City _____ State _____ Zip _____

Please invoice me for remainder of balance.

PLEASE SEND CHECKS MADE PAYABLE TO:

RBI, 97 Green Street, Suite #2, Foxboro, MA 02035

A deposit of \$100 per individual entry is required for all programs for ages 12 and under. A deposit of \$150 is required for all other registrations. All deposits are non-refundable unless written notification is given prior to August 24th, 2011..

* Credit card information MUST be provided for any amount not paid in full. All remaining balances will be processed with credit card information provided automatically on August 24, 2011 unless final balance is received prior to this date.

For more information on everything else RBI has to offer including memberships, winter programs, summer camps etc. please call

508-543-9595 or visit **www.RBIACADEMY.com**

508-543-9595
www.rbiacademy.com